

# Installation Instructions

## ODH-4500R Over Door Heater

---

Reference  
J356a

### CONTENTS

Remove from carton and check contents:

- heater unit
  - mounting bracket
  - 2 no. M6 bolts, 2 no. shakeproof washers, 4 no. plain washers.
- Ensure all packing material is removed and inlet/outlet grilles are clear.

### LOCATION

This heater is designed for high level use above frequently used doorways. It must not be installed less than 1.8metres from floor level and the maximum recommended mounting height is 2.8m. It should not be positioned immediately below a fixed socket outlet. Optimum performance is achieved when the heater is positioned as close to the top of the door as possible. For wider doorways multiple units can be installed giving a continuous curtain of hot air.

### FIXING

The heater can be mounted either a) directly to the wall or b) to the wall or ceiling using the bracket supplied.

- a) The unit is mounted directly to the wall via two keyhole slots and fixed via two holes.
- 1) Securely fix two No.10 screws (not supplied) at 500mm centres 208mm above desired position for outlet grille.
  - 2) Slide unit over screws and ensure secure fixing.
  - 3) For extra security the front cover can be removed and the two additional mounting holes used

(DISCONNECT FROM POWER SUPPLY BEFORE REMOVING COVER)

- b) The bracket can be fixed to either the wall or ceiling provided secure fixings can be made
- 1) Loosely fit M6 bolts with 2 plain washers and shakeproof washer closest to head.
  - 2) Provisionally place in bracket to ascertain optimum location and mark fixing holes.
  - 3) Remove from heater and securely fix bracket
  - 4) Replace heater at appropriate angle and tighten bolts securely.

### CONTROL

#### Remote Switch

The Remote Switching Unit (CRFS or ODH-RSW) allows ON/OFF, Fan only with 2.25 or 4.5 kW.

#### Thermostat ( CRST )

If a thermostat is required a unit of sufficient switching capacity, it can be connected in the power supply to the Remote switch thus switching the unit off totally when set temperature is reached.

Alternatively it can be connected inside the switch unit between the Fan switch and the heat switches by removing the internal connection. This will control the heating elements only. The fan will run continuously maintaining air circulation.

### ELECTRICAL CONNECTION

The heater should be installed in accordance with the latest edition of the IEE Requirements for Electrical Installation (BS 7671:2001)

Position remote switch unit in suitable location.

Remove heater cover plate (4 screws)

Select cabling with 4 cores and earth of appropriate size for current and volt drop.

Pass cable/s through cord grip in top of unit. Leave sufficient length for connection but ensuring cables do not foul blower unit. Make off connections to connector block and earth stud in accordance with circuit diagram ODH-W-006 ( copy on back page)

If remote switching is not required connect power supply to L and N and link L,LI and LII with 1.5sqmm cable. Tighten up cord grip. Replace connection cover.

**IMPORTANT : always check to ensure the heating elements cannot be energised without the fan running.**

**WARNING: THE HEATER MUST BE EARTHED.**



## OVER TEMPERATURE CUT OUT

Should the heater exceed normal operating temperature the over temperature cut out on the heating element will operate.

**To RESET** - switch off power to the unit and allow to cool before switching on again. If the problem persists consult a suitably qualified person.

Note:- **Do not cover the unit** or allow the inlet grille to be obstructed as this could cause over heating and possible damage.

## CONTROLS.

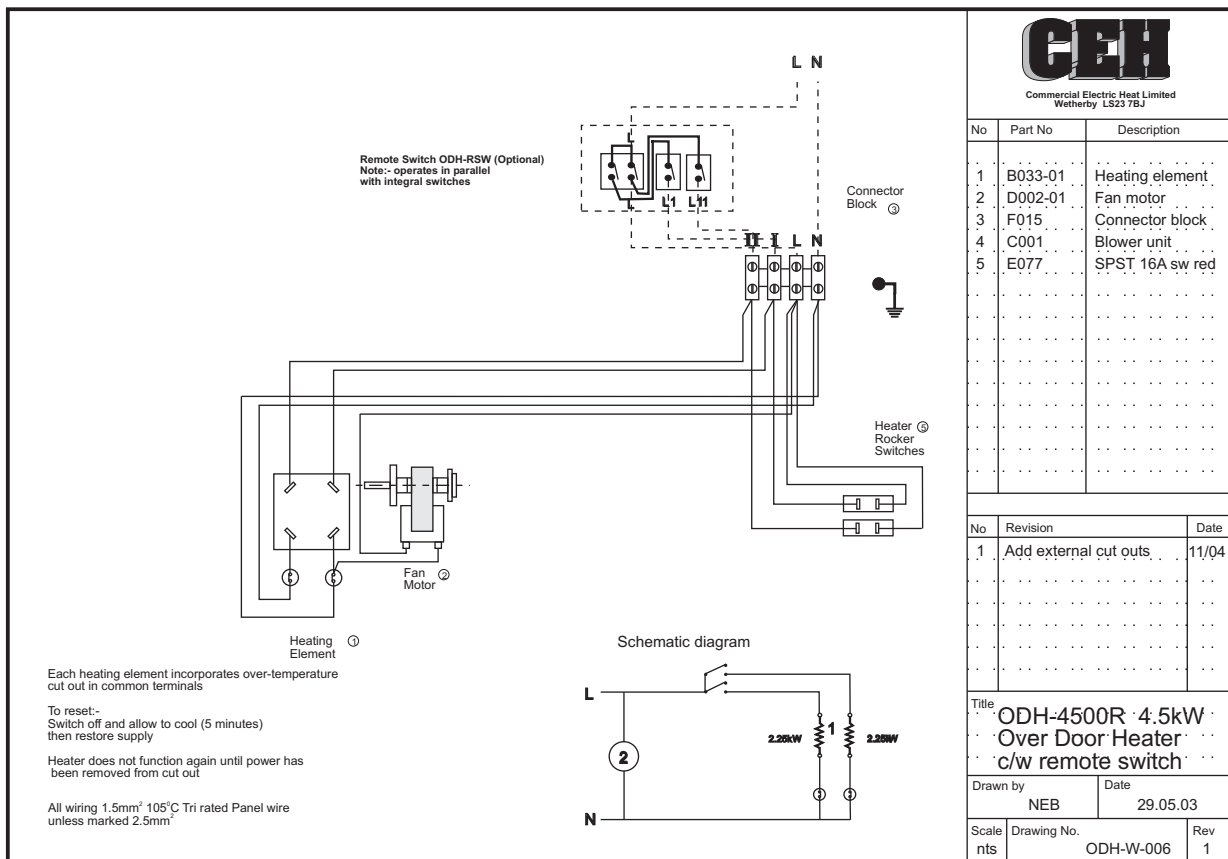
Heat control is by the 2 switches located next to the outlet grille.

- One on - half heat (2.25 kW)
- Two on - full heat (4.5 kW)
- Both off - fan only

Note: the switches are electrically interlocked to ensure the heat cannot be on without the fan operating. They operate in parallel with the remote switch. The remote switch allows on off control.

## CLEANING.

The heater should be cleaned occasionally to reduce the build up of dust which may cause the unit to overheat



Please keep these instructions for future reference

