

Installation Instructions

ODH-3000R Over Door Heater

Reference
J354b

SAFETY

The correct procedures for working at height must be adopted when installing this heater.
The heater must be installed by a suitably qualified person in accordance with current regulations.

CONTENTS.

Remove from carton and check contents:

- heater unit
- mounting bracket
- 2 no. M6 bolts, 2 no. shakeproof washers, 4 no. plain washers.

Ensure all packing material is removed and inlet/outlet grilles are clear.

LOCATION.

This heater is designed for high level use above frequently used doorways. It must not be installed less than 1.8metres from floor level and the maximum recommended mounting height is 2.3m. It should not be positioned immediately below a fixed socket outlet. Optimum performance is achieved when the heater is positioned as close to the top of the door as possible. For wider doorways multiple units can be installed giving a continuous curtain of hot air.

FIXING.

The heater can be mounted either a) directly to the wall or b) to the wall or ceiling using the bracket supplied.

a) The unit is mounted directly to the wall via two keyhole slots and fixed via two holes.

- 1) Securely fix two No.10 screws (not supplied) at 500mm centres 208mm above desired position for outlet grille.
- 2) Slide unit over screws and ensure secure fixing.
- 3) For extra security the front cover can be removed and the two additional mounting holes used

(DISCONNECT FROM POWER SUPPLY BEFORE REMOVING COVER)

b) The bracket can be fixed to either the wall or ceiling provided secure fixings can be made

- 1) Loosely fit M6 bolts with 2 plain washers and shakeproof washer closest to head.
- 2) Provisionally place in bracket to ascertain optimum location and mark fixing holes.
- 3) Remove from heater and securely fix bracket
- 4) Replace heater at appropriate angle and tighten bolts securely.

CONTROL

Remote Switch

The Remote Switching Unit (ODH-RSW) allows ON/OFF, Fan only with 1,2 or 3 kW.

Thermostat (CRST16)

If a thermostat is required a unit of sufficient current carrying capacity (16A) can be connected in the power supply to the Remote switch thus switching the heater off when set temperature is reached.

Alternatively it can be connected to control the heating elements only, the fan will run continuously maintaining air circulation. Remove the "fan switch" to "heat switch" links and link the supply side of the heat switches together then connect the thermostat between the fan switch and the heat switches.

ELECTRICAL CONNECTION

The heater should be installed in accordance with the latest edition of the IEE Requirements for Electrical Installation (BS 7671:2001) by a suitably qualified person.

Position remote switch unit in suitable location. A means of disconnection having a contact separation of 3mm in all poles should be incorporated.

Remove heater cover plate (4 screws)

Select cabling with 4 cores and earth of appropriate size for current and volt drop.

Pass cable/s through cord grip in top of unit. Leave sufficient length for connection but ensuring cables do not foul blower unit. Make off connections to connector block and earth stud in accordance with circuit diagram ODH-W-005 (copy on back page)

If remote switching is not required connect power supply to L and N and link L,LI and LII with 1.5sqmm cable. Tighten up cord grip. Replace connection cover.

IMPORTANT : always check to ensure the heating elements cannot be energised without the fan running.

WARNING: THE HEATER MUST BE EARTHED.



OVER TEMPERATURE CUT OUT

Should the heater exceed normal operating temperature the over temperature cut out on the heating element will operate.

To RESET - switch off power to the unit and allow to cool before switching on again. If the problem persists consult a suitably qualified person.

Note:- **Do not cover the unit** or allow the inlet grille to be obstructed as this could cause over heating and possible damage.

CONTROLS.

On/off control is by remote switch.
Heat Control is by the switches located next to the outlet grille.
Switch positions are:-

- Top red: - Fan and 1kW heat.
- Bottom red: - Fan and 2kW heat.
- Both red: - Fan and 3kW heat

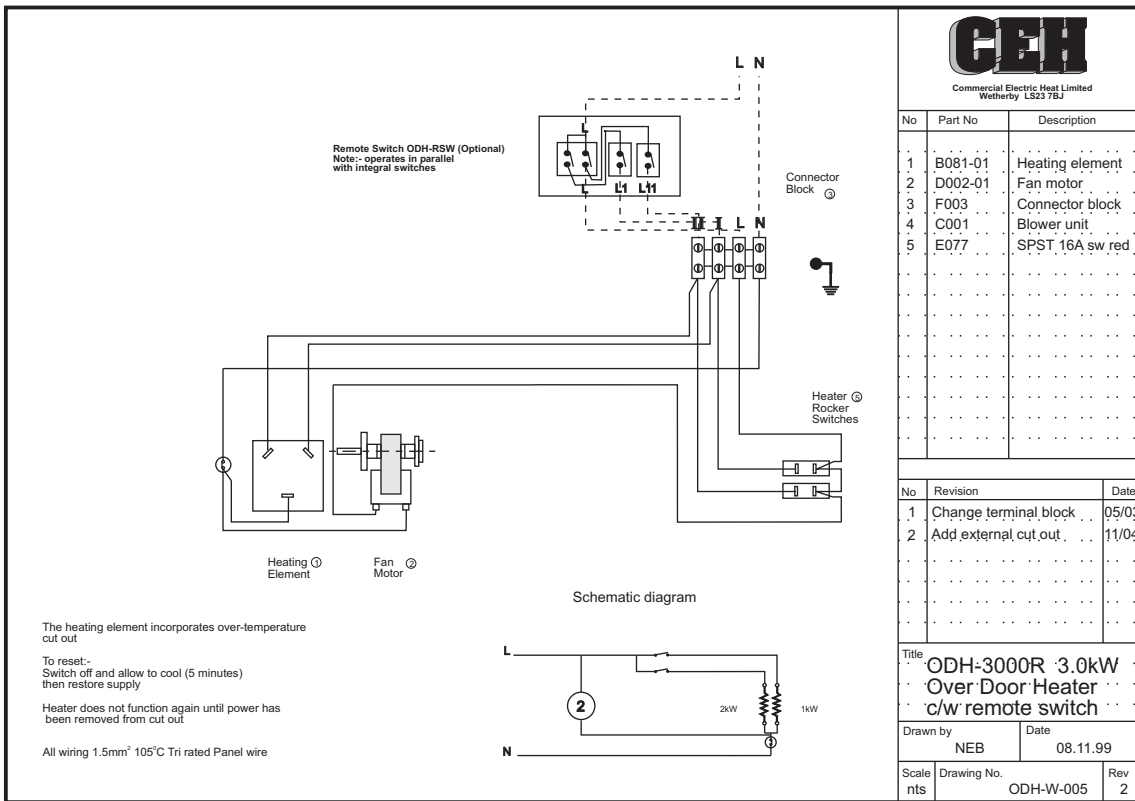
Note: the switches are electrically interlocked to ensure the heat cannot be on without the fan operating. They operate in parallel with the remote switch.

CLEANING

The heater should be cleaned occasionally to reduce the build up of dust which may cause the unit to overheat.

WARRANTY

This product is guaranteed, in accordance with our Conditions of Sale, for a period of 12 months from date of purchase. We will repair or replace, at our discretion, any part found to be defective. We cannot accept responsibility for any consequential liability.
The warranty will be invalid if the heater has not been installed in accordance with these instructions.
This does not affect your statutory rights.



Please keep these instructions for future reference

The Manufacturers reserve the right to change the specification without prior notice EO&E

P01



Commercial Electric Heat Limited
Unit 712
Thorp Arch Trading Estate
WETHERBY
West Yorkshire
LS23 7BJ

Tel 01937 844994 Fax 01937 844123
Email sales@cehltd.co.uk Web www.cehltd.co.uk