

Installation Instructions CFS Floor Level Convector Heater

Reference
J203b

HEATER LOCATION

The heater is designed for low level or skirting mounting preferably on an outside wall and under windows.

DO NOT BLOCK THE BOTTOM INLET

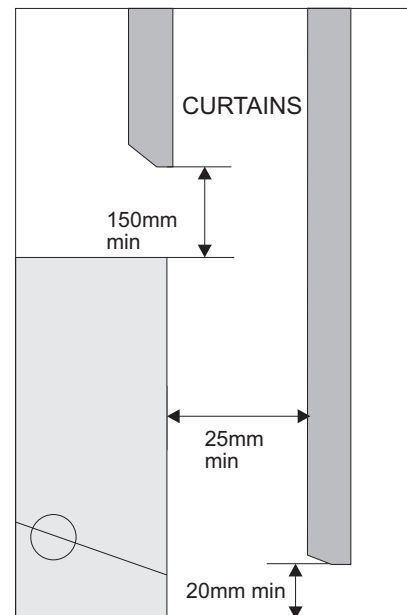
For best results allow clearance under the heater for carpet installation. The bottom of the heater may rest on the floor and carpet can be placed up to the heater, provided the thickness of the carpet is no higher than the lip at the bottom of the heater.

DO NOT LOCATE THE HEATER BELOW AN ELECTRICAL SOCKET OUTLET.

KEEP ELECTRICAL CORDS, CURTAINS AND OTHER FURNISHINGS AWAY FROM THE HEATER.

Drapery material should not discolour, shrink or stretch upon extended(1000hour) exposure to temperatures of 95°C

For optimum operation of the heater and minimum effect on furnishings the dimensions in the adjacent diagram should be closely adhered to.



INSTALLATION

- 1) Check heater rating label to ensure correct loading and voltage.
- 2) Remove right hand connection box cover by undoing single screw.
- 3) Remove appropriate knock out for inlet wiring.
- 4) Place heater against wall, level and mark desired mounting holes. Fix heater with appropriate fixings
Note:- DO NOT overtighten the mounting screws (when tight back off 1/2 turn to allow for normal expansion and contraction. DO NOT restrict this normal expansion and contraction by placing any permanent obstruction (moulding etc.) against the heater. Allow 3mm at each end.
- 5) Connect power supply and earth

ELECTRICAL CONNECTIONS.

All connections should be made by a suitably qualified person in accordance with the latest edition of the IEE Requirements for Electrical Installations (BS 7671:2001) to either:-

230Vac 50Hz. power supply via a two pole switched connection unit having a contact separation of at least 3mm or a 13A fused plug top.

Connect as follows:-

- Green-yellow wire to terminal marked E , with earth symbol or coloured green or green-yellow.
- Blue wire to terminal marked N or coloured black.
- Brown wire to terminal marked L or coloured red

WARNING: THE HEATER MUST BE EARTHED.



THERMOSTAT OPERATION (if fitted)

Turn thermostat fully clockwise. Allow heater to run until room is at desired temperature. Turn thermostat counterclockwise until heater just turns off. (a faint click will be heard) This will maintain the room at the desired comfort level. As heat becomes more evenly distributed throughout the room further fine adjustment may be necessary.

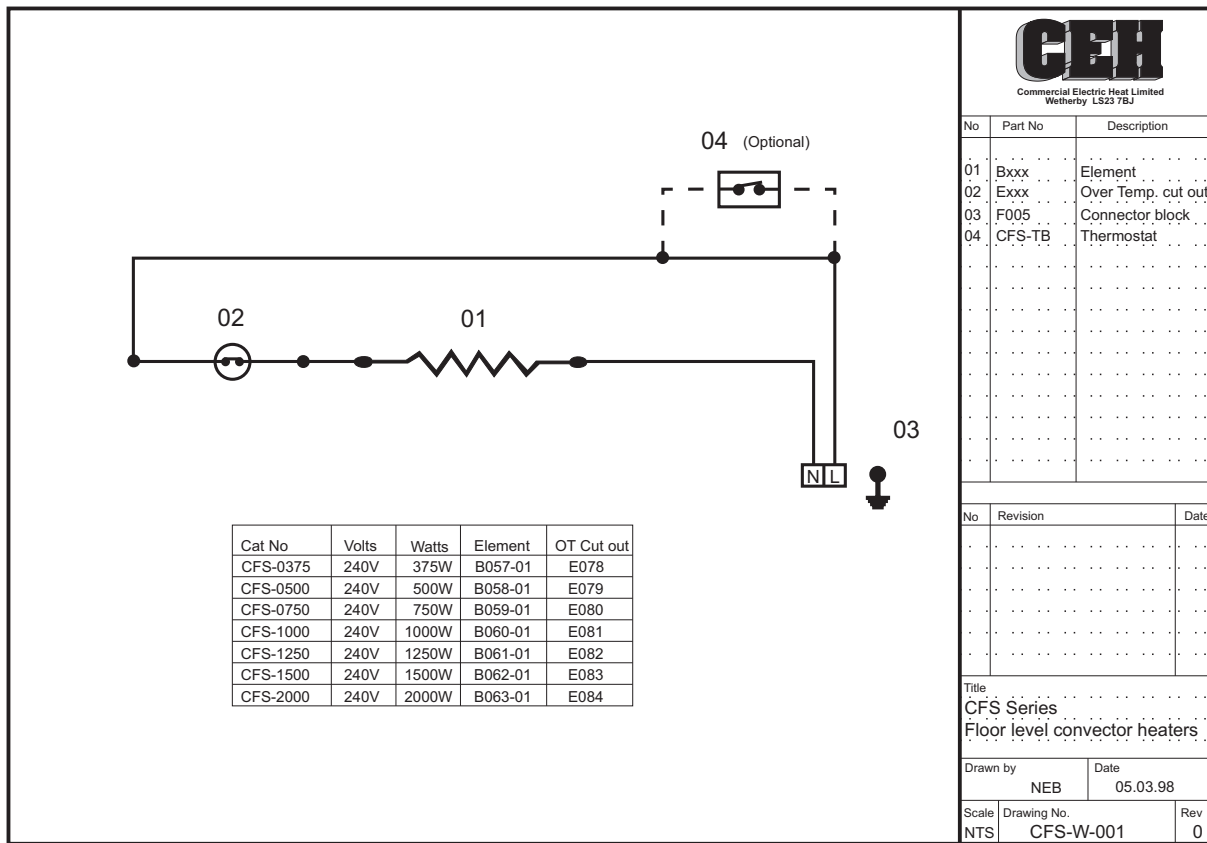
Access for Tamperproof thermostat adjustment is by removing the end cover.

REMOTE THERMOSTAT

A remote thermostat of sufficient current rating for the heater (CFS- 2000 - 10A) can be connected in the power supply.

The thermostat should be located so as to allow an unobstructed airflow around it. Avoid locations where the thermostat may be influenced by doors, windows, direct sunlight, the heater or any other heat source. The objective is to sense air temperature.

The thermostat should not be mounted on an outside wall.



Commercial Electric Heat Limited
Wetherby LS23 7BJ

No	Part No	Description
01	Bxxx	Element
02	Exxx	Over Temp. cut out
03	F005	Connector block
04	CFS-TB	Thermostat

No	Revision	Date

Title
CFS Series
Floor level convector heaters

Drawn by
NEB

Date
05.03.98

Scale
NTS

Drawing No.
CFS-W-001

Rev
0

L011

CLEANING

At the beginning of each heating season it is recommended that heaters are cleaned to eliminate any accumulation of dust or lint. Before cleaning ensure power is off and the element is cool. Do not remove front cover during cleaning. Use the narrow suction tool of the vacuum cleaner to clean above and below the element.

WARRANTY

This product is guaranteed, in accordance with our Conditions of Sale, for a period of 12 months from date of purchase. We will repair or replace, at our discretion, any part found to be defective. We cannot accept responsibility for any consequential liability.

The warranty will be invalid if the heater has not been installed in accordance with these instructions.

This does not affect your statutory rights.

Please keep these instructions for future reference.

The manufacturers reserve the right to change the specification at any time without prior notice E&OE

P01



Commercial Electric Heat Limited
Unit 712
Thorp Arch Trading Estate
WETHERBY
West Yorkshire
LS23 7BJ

Tel 01937 844994 Fax 01937 844123
Email sales@cehltd.co.uk Web www.cehltd.co.uk