

Installation Instructions

ODH-4500 Over Door Heater

Reference
J128b

CONTENTS.

Remove from carton and check contents:

- heater unit
- mounting bracket
- 2 no. M6 bolts, 2 no. shakeproof washers, 4 no. large plain washers.

Ensure all packing material is removed and inlet/outlet grilles are clear.

LOCATION.

This heater is designed for high level use above frequently used doorways. It must not be installed less than 1.8metres from floor level and the maximum recommended mounting height is 2.8m. It should not be positioned immediately below a fixed socket outlet. Optimum performance is achieved when the heater is positioned as close to the top of the door as possible. For wider doorways multiple units can be installed giving a continuous curtain of hot air.

FIXING.

The heater can be mounted either a) directly to the wall or b) to the wall or ceiling using the bracket supplied.

a) The unit is mounted directly to the wall via two keyhole slots and fixed via two holes.

- 1) Securely fix two No.10 screws (not supplied) at 500mm centres 208mm above desired position for outlet grille.
- 2) Slide unit over screws and ensure secure fixing.
- 3) For extra security the front cover can be removed and the two additional mounting holes used

(DISCONNECT FROM POWER SUPPLY BEFORE REMOVING COVER)


b) The bracket can be fixed to either the wall or ceiling provided secure fixings can be made

- 1) Remove plugs from holes in end of unit, loosely fit M6 bolts with 2 plain washers and shakeproof washer closest to head.
- 2) Provisionally place in bracket to ascertain optimum location and mark fixing holes.
- 3) Remove from heater and securely fix bracket
- 4) Replace heater at appropriate angle and tighten bolts securely.

ELECTRICAL CONNECTIONS.

The Heater should be installed in accordance with the latest edition of the IEE Regulations for Electrical Installations (BS 7671 :1992) by a suitably qualified person.
The unit is NOT suitable for connection via a 13A plug and should be permanently connected to a suitable 230Vac 50Hz. power supply incorporating a means of isolation having a contact separation of at least 3mm in all poles.

Connect as follows:-

Green-yellow wire to terminal marked E , with earth symbol  or coloured green or green-yellow.

Blue wire to terminal marked N or coloured black.

Brown wire to terminal marked L or coloured red.

WARNING: THE HEATER MUST BE EARTHED.



OVER TEMPERATURE CUT OUT

Should the heater exceed normal operating temperature the over temperature cut out on the heating element will operate, the fan will continue to run.

To RESET - switch off power to the unit and allow to cool before switching on again. If the problem persists consult a suitably qualified person.

Note:- **Do not cover the unit** or allow the inlet grille to be obstructed as this could cause over heating and possible damage.

CONTROLS.

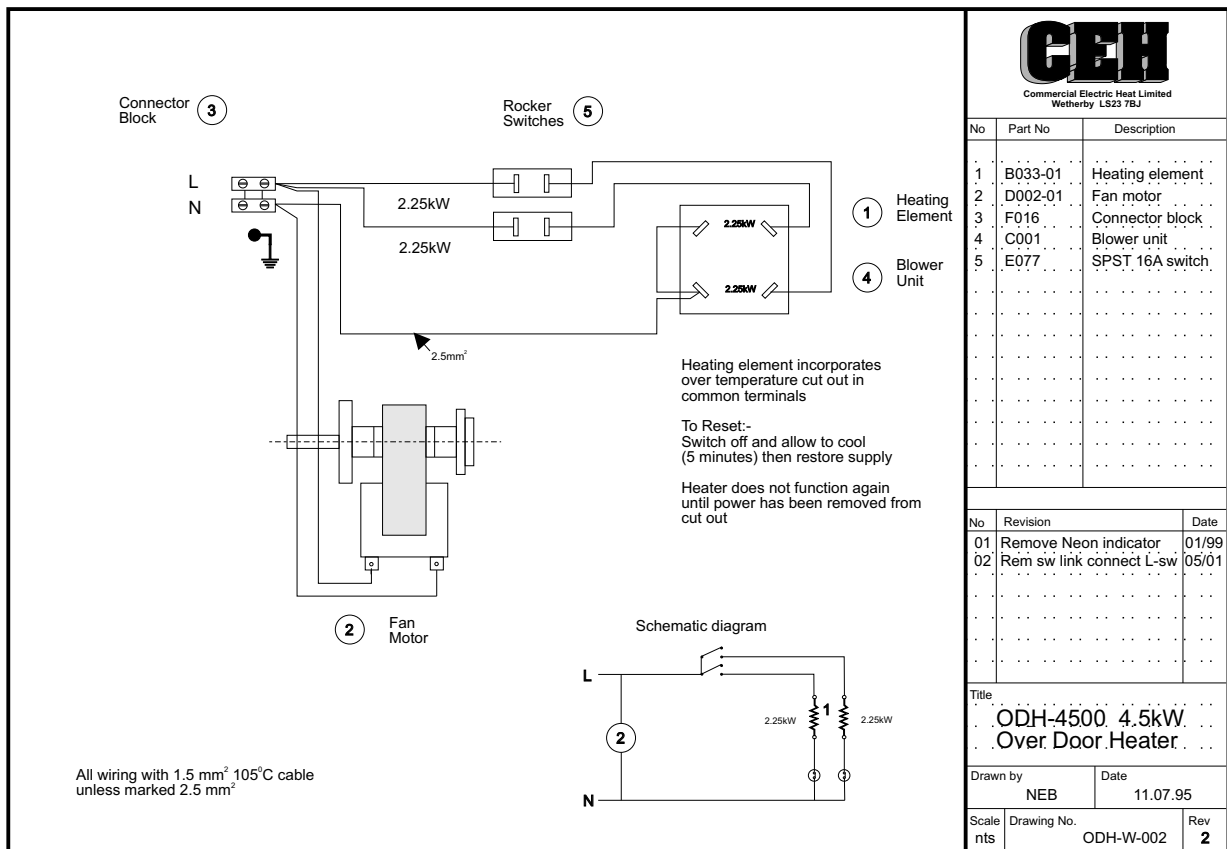
Heat control is by the 2 switches located next to the outlet grille.

- One on - half heat (2.25 kW)
- Two on - full heat (4.5 kW)
- Both off - fan only

Note: the switches are electrically interlocked to ensure the heat cannot be on without the fan operating.

CLEANING.

The heater should be cleaned occasionally to reduce the build up of dust which may cause the unit to overheat



Please keep these instructions for future reference

