

Installation Instructions CHDA Fan Forced Wall Heater

Reference
J062b

- Remove from carton and check contents :-
- grille, captive fixing screws and allen key (4mm)
 - cover screw and allen key (2mm)
 - heater assembly and fixing screws (4)
 - thermostat knob

HEATER LOCATION

The heater should be mounted vertically on the wall with the airflow down. To ensure proper air distribution a minimum spacing from heater to closest adjacent wall, floor or ceiling of 300mm must be observed. When RECESSED the flanges of the wall box should be 5mm from the finished surface of the wall .

RECESSED MOUNTING

- 1) Remove heater assembly from CHDA-B Recess box.
- 2) Create cut-out 505mm x 365mm x 110mm deep in wall ensuring adequate fixing locations are available.
- 3) Remove appropriate knock out and fix recess box. Pull through sufficient cable to make connections.
- 4) Make connections to terminal block and earth screw.
- 5) Install heater assembly into recess box, fix with screws (4) provided.
- 6) Fix grille to heater securing with captive screws (4) with allen key supplied
- 7) Fit thermostat knob to thermostat spindle. For tamperproof controls fit plate to lower part of grille and

SURFACE MOUNTING

- 1) Securely fix recess box to wall via fixing holes in back.
- 2) Place surface box CHDA-S over recess box.
- 3) Use bottom knock-out only for surface fixing.
- 4) Proceed as for recessed fixing clamping box between wall and grille.

ELECTRICAL CONNECTIONS

All connections should be made to current regulations by a suitably qualified person. CHDA 2000 and 3000 can be connected via a 13A plug top. All units can be permanently connected to the power supply incorporating a means of isolation having a contact separation of at least 3mm in all poles.

Connect as follows:-

Green yellow wire to terminal marked E, with earth symbol 

Blue wire to terminal marked N

Brown wire to terminal marked L

THE UNIT MUST BE EARTHED

THERMOSTAT OPERATION

If tamperproof remove plate, secured by allen key, from lower part of grille

Turn thermostat fully clockwise. Allow heater to run until room is at desired temperature.

NOTE: Heater must run for approx. 5 minutes before thermostat will control at desired comfort level.

Turn thermostat counterclockwise until heater just turns off.

MAINTENANCE

The unit should be cleaned every year to reduce build up of dust.



OVER TEMPERATURE CUT OUT.

Power off type.

If unit overheats cut out will function.

To reset:-

Switch off power and allow to cool (approx. 5 mins) then restore supply.

Heater will not function again until power has been removed from cut out.

Capillary type.

If unit overheats cut out will function.

To reset:-

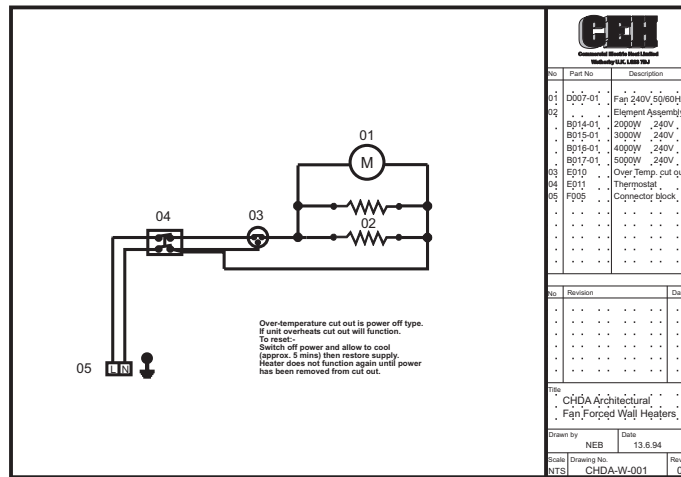
Switch off power and allow to cool (approx. 5 mins)

Locate small hole in control panel portion of the front grille (this will be behind the tamperproof cover if this has been fitted). Using a small screwdriver gently press the reset button.

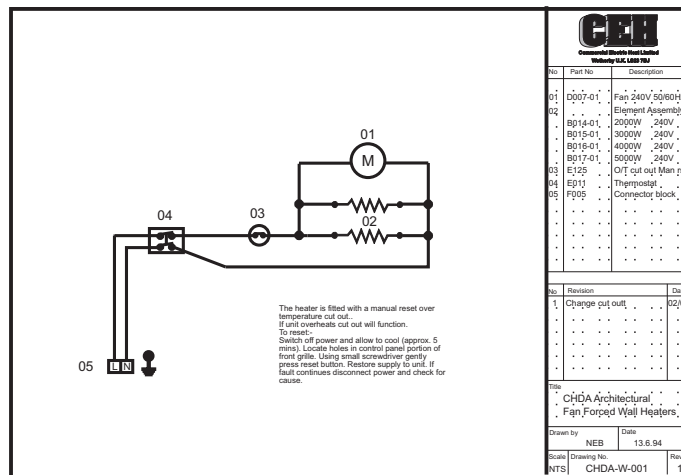
Restore supply.

If fault continues disconnect power and check for cause.

Power off type.



Capillary type



WARRANTY

This product is guaranteed, in accordance with our Conditions of Sale, for a period of 12 months from date of purchase. We will repair or replace, at our discretion, any part found to be defective. We cannot accept responsibility for any consequential liability.

The warranty will be invalid if the heater has not been installed in accordance with these instructions.

This does not affect your statutory rights.

Please keep these instructions for future reference.

The manufacturers reserve the right to change the specification at any time without prior notice E&OE

P01



Commercial Electric Heat Limited
Unit 712
Thorp Arch Trading Estate
WETHERBY
West Yorkshire
LS23 7BJ

Tel 01937 844994 Fax 01937 84412
Email sales@cehltd.co.uk Web www.cehltd.co.uk