

Installation Instructions CFD Floor Drop In Fan Heater

Reference
J059b

Remove from carton and check contents :-
- grille and fixing screws (2)
- heater assembly

CAUTION

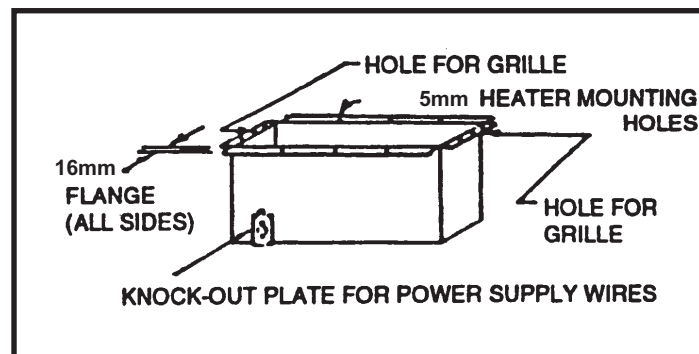
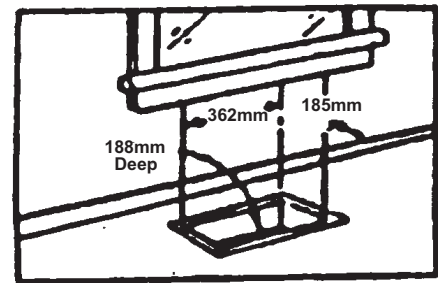
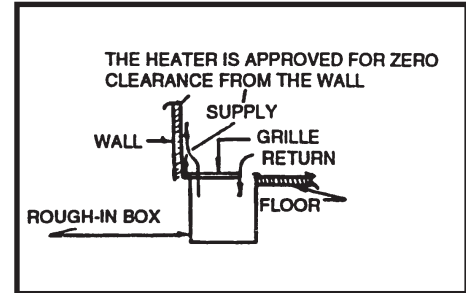
DO NOT mount heater where obstruction of the heater airflow might occur such as below drapes or furniture.

HEATER LOCATION

The heater is for mounting in floors or sills. Do NOT install in heavily trafficked areas such as doorways. The heater can be mounted with zero clearance to walls and joists. Flow and return air is via the top grille hence fitting in a solid floor is possible.

INSTALLATION


- 1) Create cut-out 362mm x 191mm in floor ensuring at least a depth of 185mm from the surface.
- 2) Remove grille by removing two screws. Remove knock out plate and appropriate knock out for side or bottom connections. Pull through sufficient cable to make connections.
- 3) Make connections to terminal block and earth screw. The unit is supplied for 240Vac operation.
- 4) Place heater in the opening and secure to floor with screws (not supplied).
- 5) Replace grille and fix with two screws previously removed.



ELECTRICAL CONNECTIONS.

The Heater should be installed in accordance with the latest edition of the IEE Requirements for Electrical Installation (BS 7671:2001) by a suitably qualified person. The unit should be connected to a suitable 230Vac 50Hz. power supply incorporating a means of isolation having a contact separation of at least 3mm in all poles.

Connect as follows:-

- Green-yellow wire to terminal marked E , with earth symbol. 
- Blue wire to terminal marked N
- Brown wire to terminal marked L

WARNING: THE HEATER MUST BE EARTHED.



OVER TEMPERATURE SAFETY CUT OUT.

The heater is fitted with an auto reset thermal safety cutout to prevent overheating should the heater grille become accidentally obstructed.

A BUZZER is connected to sound when the cut out operates thus signalling a fault condition. If the buzzer sounds immediately disconnect from power supply and determine cause of overheating

DO NOT OPERATE HEATER WITH BUZZER SOUNDING

THERMOSTAT OPERATION (if fitted)

The thermostat is operated by a screwdriver through the grille

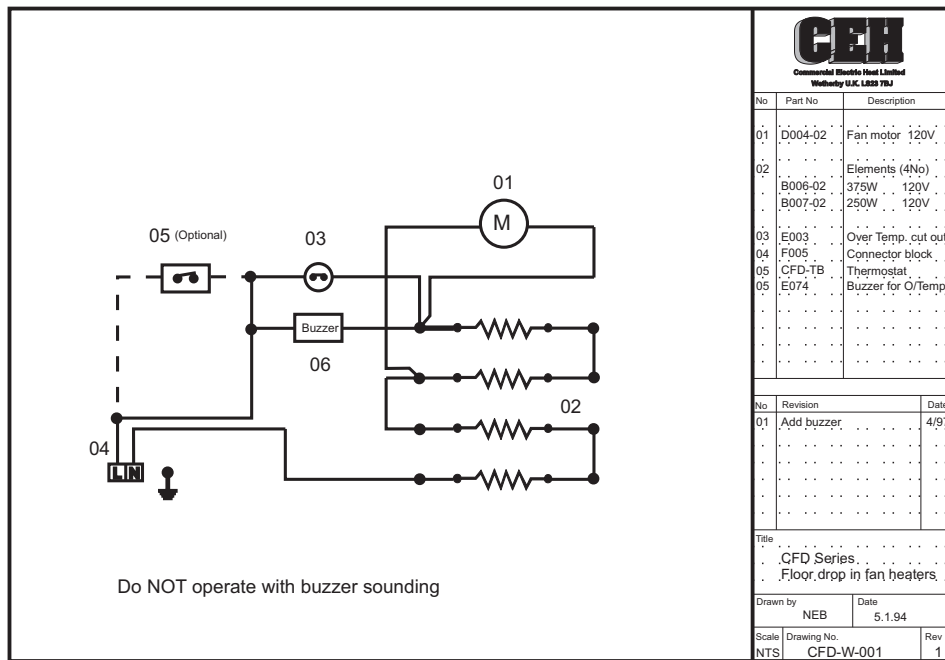
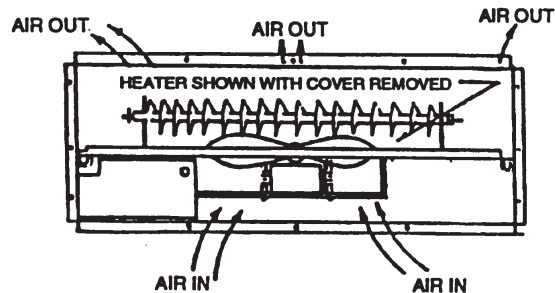
Turn thermostat fully clockwise. Allow heater to run until room is at desired temperature.

NOTE: Heater must run for approx. 5 minutes before thermostat will control at desired comfort level.

Turn thermostat counterclockwise until heater just turns off.

MAINTENANCE

The unit should be cleaned occasionally to reduce build up of dust.



WARRANTY

This product is guaranteed, in accordance with our Conditions of Sale, for a period of 12 months from date of purchase. We will repair or replace, at our discretion, any part found to be defective. We cannot accept responsibility for any consequential liability.

The warranty will be invalid if the heater has not been installed in accordance with these instructions.

This does not affect your statutory rights.

Please keep these instructions for future reference.

The manufacturers reserve the right to change the specification at any time without prior notice E&OE

P01



Commercial Electric Heat Limited
Unit 712
Thorp Arch Trading Estate
WETHERBY
West Yorkshire
LS23 7BJ

Tel 01937 844994 Fax 01937 844123
Email sales@ceh ltd.co.uk Web www.ceh ltd.co.uk