

# Installation Instructions CFS Floor Level Convector Heater

Reference  
J203c

## HEATER LOCATION

The heater is designed for low level or skirting mounting preferably on an outside wall and under windows.

### DO NOT BLOCK THE BOTTOM INLET

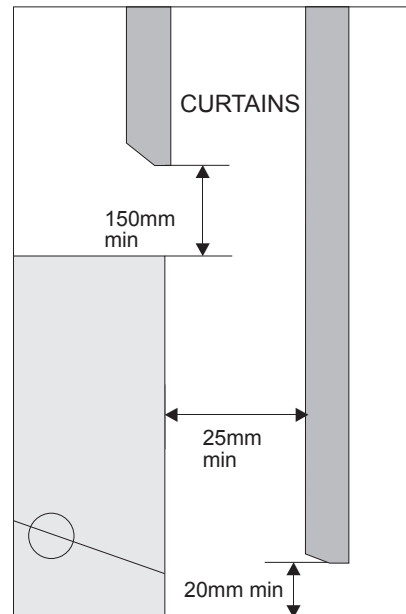
For best results allow clearance under the heater for carpet installation. The bottom of the heater may rest on the floor and carpet can be placed up to the heater, provided the thickness of the carpet is no higher than the lip at the bottom of the heater.

### DO NOT LOCATE THE HEATER BELOW AN ELECTRICAL SOCKET OUTLET.

### KEEP ELECTRICAL CORDS, CURTAINS AND OTHER FURNISHINGS AWAY FROM THE HEATER.

Drapery material should not discolour, shrink or stretch upon extended(1000hour) exposure to temperatures of 95°C

For optimum operation of the heater and minimum effect on furnishings the dimensions in the adjacent diagram should be closely adhered to.



## INSTALLATION

- 1) Check heater rating label to ensure correct loading and voltage.
- 2) Remove right hand connection box cover by undoing single screw.
- 3) Remove appropriate knock out for inlet wiring.
- 4) Place heater against wall, level and mark desired mounting holes. Fix heater with appropriate fixings  
Note:- DO NOT overtighten the mounting screws ( when tight back off 1/2 turn to allow for normal expansion and contraction. DO NOT restrict this normal expansion and contraction by placing any permanent obstruction (moulding etc.) against the heater. Allow 3mm at each end.
- 5) Connect power supply and earth

## ELECTRICAL CONNECTIONS.

All connections should be made by a suitably qualified person in accordance with the latest edition of the IEE Requirements for Electrical Installations (BS 7671:2001) to either:-

230Vac 50Hz. power supply via a two pole switched connection unit having a contact separation of at least 3mm or a 13A fused plug top.

Connect as follows:-

Green-yellow wire to terminal marked E , with earth symbol or coloured green or green-yellow.

Blue wire to terminal marked N or coloured black.

Brown wire to terminal marked L or coloured red



WARNING: THE HEATER MUST BE EARTHED.



## THERMOSTAT OPERATION (if fitted)

Turn thermostat fully clockwise. Allow heater to run until room is at desired temperature. Turn thermostat counterclockwise until heater just turns off. ( a faint click will be heard ) This will maintain the room at the desired comfort level. As heat becomes more evenly distributed throughout the room further fine adjustment may be necessary.

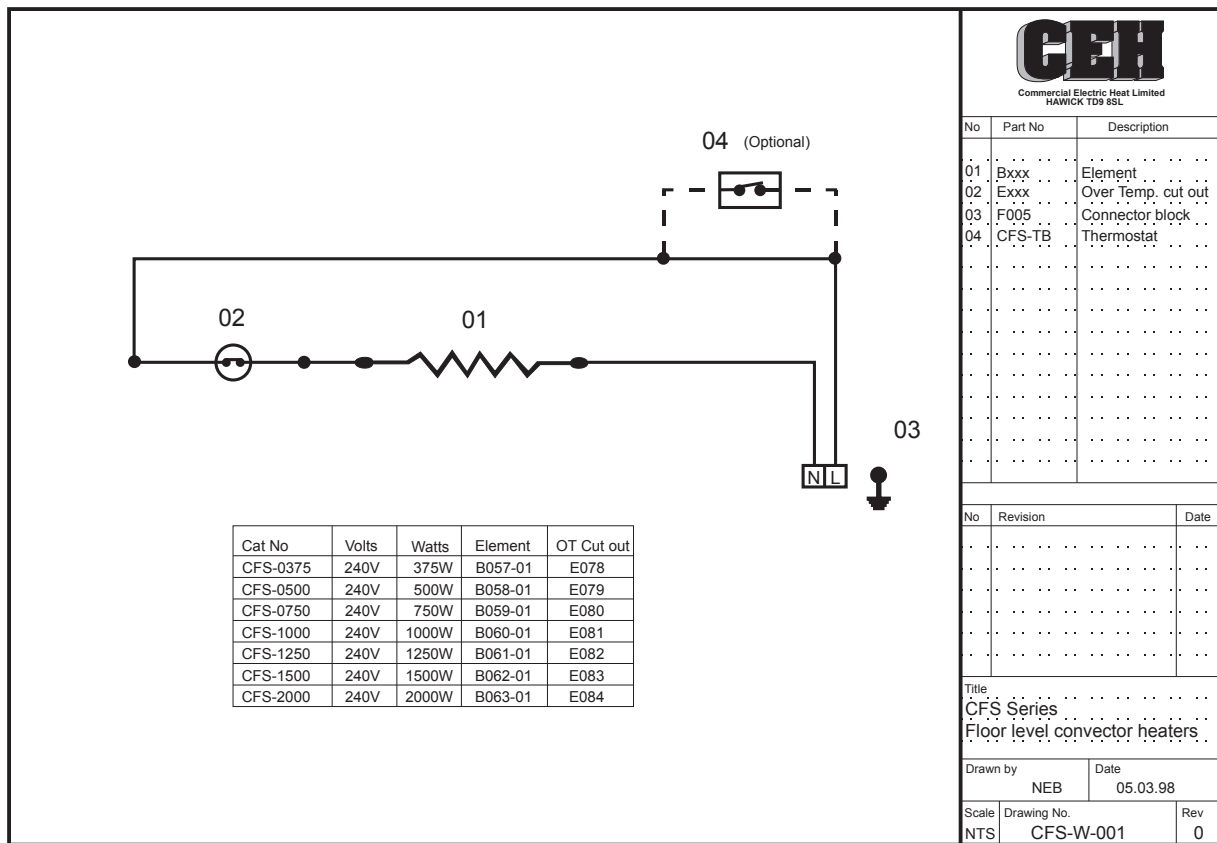
Access for Tamperproof thermostat adjustment is by removing the end cover.

## REMOTE THERMOSTAT

A remote thermostat of sufficient current rating for the heater ( CFS- 2000 - 10A ) can be connected in the power supply.

The thermostat should be located so as to allow an unobstructed airflow around it. Avoid locations where the thermostat may be influenced by doors, windows, direct sunlight, the heater or any other heat source. The objective is to sense air temperature.

The thermostat should not be mounted on an outside wall.



## CLEANING

At the beginning of each heating season it is recommended that heaters are cleaned to eliminate any accumulation of dust or lint. Before cleaning ensure power is off and the element is cool. Do not remove front cover during cleaning. Use the narrow suction tool of the vacuum cleaner to clean above and below the element.

## WARRANTY

This product is guaranteed, in accordance with our Conditions of Sale, for a period of 12 months from date of purchase. We will repair or replace, at our discretion, any part found to be defective. We cannot accept responsibility for any consequential liability.

The warranty will be invalid if the heater has not been installed in accordance with these instructions.

This does not affect your statutory rights.

Please keep these instructions for future reference.

The manufacturers reserve the right to change the specification at any time without prior notice E&OE

P01



Commercial Electric Heat Limited  
Burnfoot Industrial Estate  
HAWICK  
Roxburghshire  
TD9 8SL

Tel 01450 372103 Fax 01450 377800  
Email sales@cehltd.co.uk Web www.cehltd.co.uk